

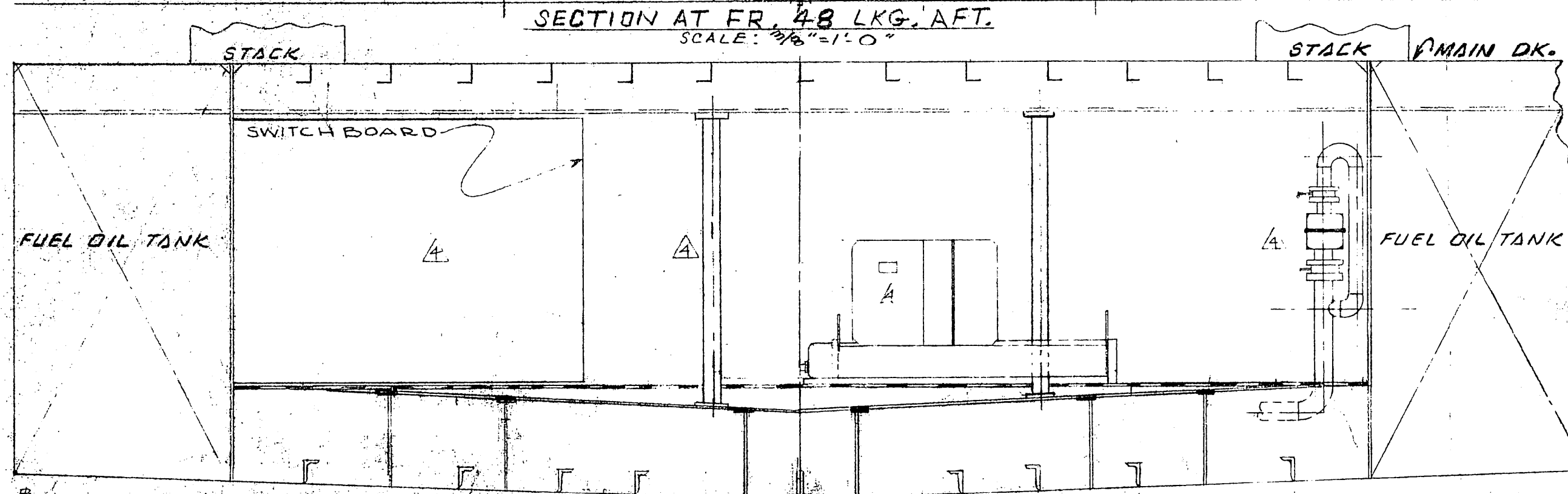
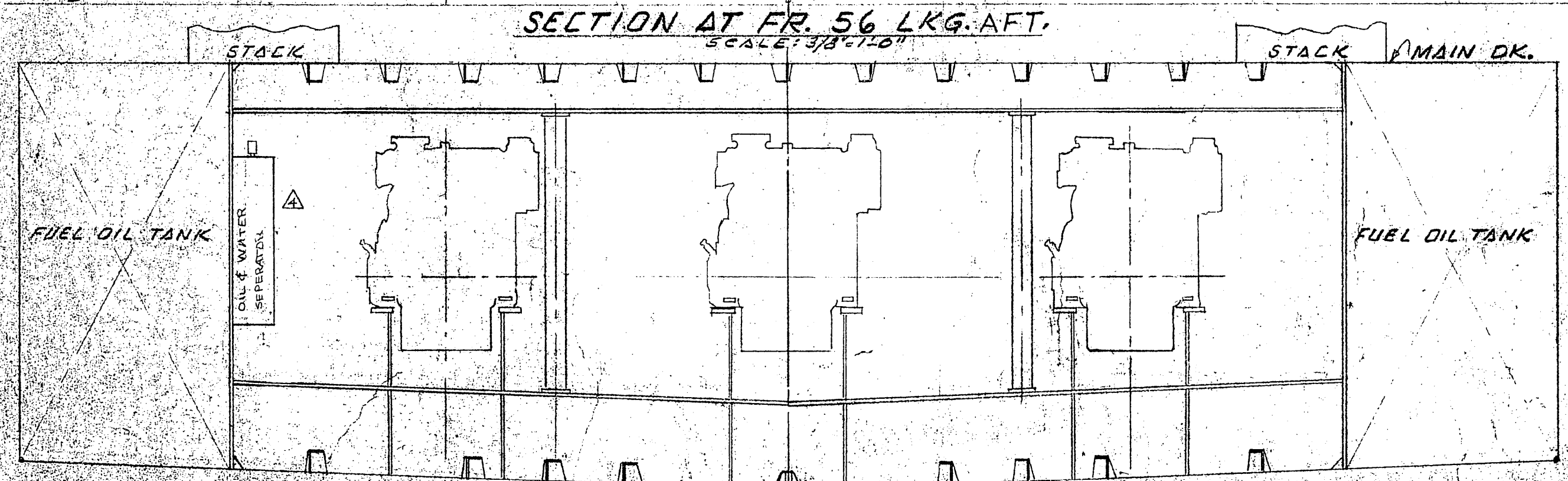
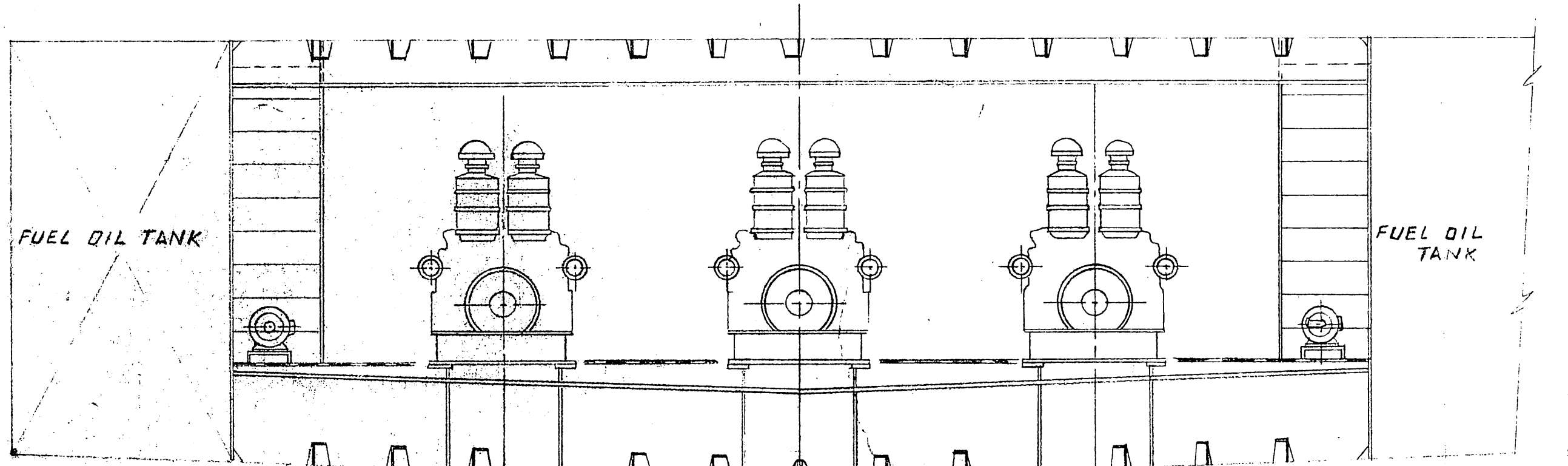
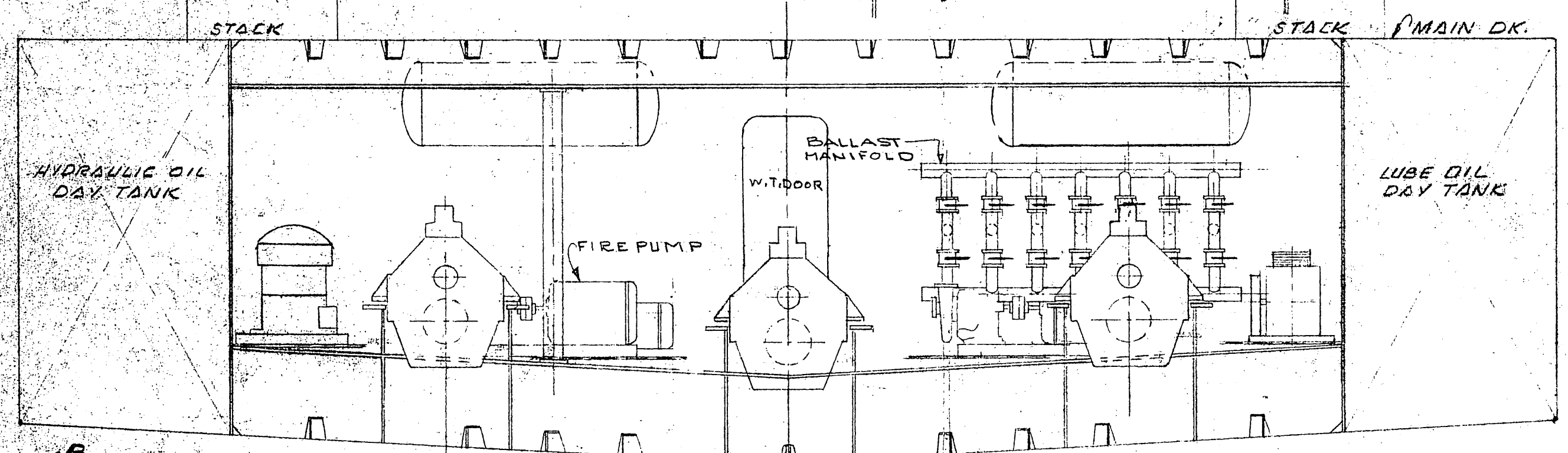
REV. NO.	DESCRIPTION	BY	DATE	APPROV.
4	MADE CORRECTIONS PER MARKED UP PRINT BY HUGH SMITH	M. B.	7/2/81	
5	MOVED CONDENSING UNITS PER MARKED UP PRINT BY DALE GEERDES	D.G.	8/12/81	
1	REV. MACH. ARR'G'T. PER/ENG. DEVELOPMENTS.	P.E.	4.17.81	
2	REV. MACH. ARR'G'T. DUE TO ADDITIONAL EQUIPMENT FROM HUGH SMITH LTR. DTD. APRIL 17, '81 & SHOWED DIRTY OIL TANKS	P.E.	4.24.81	P.E.
3	REV. MACH. ARR'G'T. DUE TO NEW SPEC SHEET ON REDUCTION GEAR. ADD'D MAKE SPEC. PER MURPHY V. RANT BY HUGH SMITH	J.T.	5/20/81	A.T.J.

NOTE!

PARTIAL F. S. L. E. D. K. PLAN
SCALE: 1/4" = 1'-0"

CONST. CHECK

EQUIPMENT	QTY	DESCRIPTION	NOTE
MAIN ENGINE	3	CATERPILLAR MOD. 3412-G25HP @ 1800 RPM	
MAIN GENERATORS	3	DETROIT DIESEL 8V-71 ENGINE DELCO GENERATOR MOD. E7057	DESIGNED FOR PARALLEL OPERATION @ 1800 RPM
MARINE GEAR	2	RENTUIS MARINE REVERSE RED. GEAR WAY 500.3-511	
MARINE GEAR	1	RENTUIS MARINE REVERSE RD. GEAR WAY	
AIR COMPRESSOR	2	MOBEL HIOTX, TYPE 30	10 HP. MOTOR @ 1750 RPM, 3% CFM FREE AIR @ 250 PSIG USCG APPROVED
AIR RECEIVERS	2		
SWITCHBOARD	1		
STEERING GEAR UNIT	1	STEERING SYSTEM INC. 2-HYD. PUMP UNITS, 1750 RPM ELEC. MOTORS (1-EA.) MOUNTED ON A HYD. STORAGE TK.	
BILGE & BALLAST PUMP	1	GOULDS # 3755, GROUP "M" 2'x3'-7", 3 H.P., 1750 RPM	
FIRE PUMP	1	GOULDS # 3755, GROUP "M" 2'x3'-7", 1.5 HP, 3500 RPM	
FUEL OIL PUMP	1	GOULDS # 3755, GROUP "M" 2'x3'-7", 3 H.P., 1750 RPM	
DIRTY OIL PUMP	1	WIKING MODEL HL 195D, 1 1/2" x 1 1/2" x 2 H.P., 1200 RPM	
FUEL OIL HAND-PUMP	1	BLACKMER MOD. PA-416, 1 1/2" STURNS/GALLON	
ELECT. WTR. HEATER	2	62 GAL. (4 KW)	
HOT WTR. PUMP	1	BELL & GOSSETT SERIES HV 1 1/2"	
SEWAGE TREATMENT	1	RED FOX, MOD. RF 350 - PISTON TYPE BLOWER	PACO MODEL PIP. 550 SEWAGE EJECTOR PACKAGE
POTABLE WATER PRESSURE SET	1	MYERS MOD. HC-75 SWACT PUMP 7/4 HP MOTOR @ 3450 RPM	
FUEL OIL SEPARATOR	1	WESTFALIA SEPARATOR MODEL OTAF-700-266 (STD.)	HARWARD MOD. MARK II - BOT GLASS LINE VERTICAL TANK 3 HP MOTOR @ 1800 RPM
UTILITY PUMP	1	GOULDS # 3755, GROUP "M" 2'x3'-7", 1.5 HP, 3500 RPM	
SANITARY WATER PRESSURE SET	1	SAME AS POT. WTR. PRESS. SET	
OIL WATER SEPARATOR	1	KEENE MOD. 2150 RATE @ 600 GPH COMPLETE W/ MANO. PUMP	
BOW THRUSTER	1	SCHOTTLE MAKEUPERING 5/8" DRIVEN BY 30 HP 8V-71 DIESEL ENGINE	
CHILLER UNIT	2	MOD. HK 015, 020	



DESIGN ASSOCIATES, INC.
NAVAL ARCHITECTS MARINE ENGINEERS
NEW ORLEANS, LA.

YIDEWATER MARINE SERVICE

143' x 36' x 10' SEISMIC VESSEL

MACHINERY ARRANGEMENT

Drawn: JOSE H. Date: JAN. 3 / 80 Checked: R.C.B.
Traced: Date: Checked:
Aprvd: Date: Checked:
Sheet 1 Of 1 Drawing No. 22062-17 Revision Mark